



Bolivia's farmers grow their staple crops of potatoes and quinoa in challenging circumstances on small plots of land in the cold, dry highlands. Small irrigation systems and other agriculture inputs funded by SHARE are helping to improve production.

VULNERABLE PLACES VULNERABLE PEOPLE

The rural poor in developing countries farm without access to credit, crop insurance, government supports, up to date technical information, and inputs. They have few assets. Peasant farmers farm the sloping terrain on mountain sides, on semi arid lands, near flood plains or on overused marginal soils. They farm in these less desirable places because they have no alternatives; they may have been pushed off more fertile land, displaced in conflict or settled in land reform. They are vulnerable people farming in vulnerable places.

In spite of the challenges, these small scale farmers provide much of the food consumed in developing countries. Setbacks such as drought, torrential rains, sickness or injury have the potential to throw farm families into abject poverty, hunger and despair.

SHARE's projects work in these vulnerable places with these vulnerable farm families to reduce risks and build up resilience to setbacks, challenges and disasters.

SHARE funds simple irrigation systems to provide water in times of prolonged drought increasing production and extending the growing season. Diversifying

production helps to mitigate against the potential disaster of losing one main crop. SHARE provides chickens, geese, goats, sheep, pigs and cattle that are a source of food and income when poor harvests occur.

SHARE's workshops and the annual Organic Growers' Conference reach hundreds of vulnerable farmers who are learning low cost ecological farming methods. Agriculture technicians make site visits to assist and instruct in mulching techniques that conserve scarce moisture and composting to enrich soils.

'Added value' enterprises also help mitigate against setbacks.

SHARE provides supplies to groups to process backyard fruits, training for organic certification, and assistance for storage and marketing farm produce. SHARE also funds small alternative skills based rural enterprises that provide additional income for a farm family. Women's cooperatives are funded to make and sell jams or participate in a sewing cooperative providing a small household income.

SHARE's support strengthens vulnerable farm families ensuring food security and a better future.

"PROACTIVE AGRICULTURAL INVESTMENT COSTS ABOUT ONE-FIFTEENTH AS MUCH PER PERSON AS SENDING FOOD AID TO HUNGRY PEOPLE ONCE FARM PRODUCTION COLLAPSES."

PEOPLE CENTRED RESILIENCE, OXFAM 2009

HELPING FARMERS IN VULNERABLE PLACES



FARMING IN ARID AREAS

The north east area of Brazil is the home to over 20 million subsistence farmers. In this vast, semi arid area many farmers' livelihoods are now being threatened by the worst regional drought in 30 years. The poorest farmers living on land settlements are suffering irreparable losses that endanger their livestock, their seeds, their families and their own lives. For years SHARE has supported

agriculture training in specialized farming methods that help farmers to exist in this semi-arid tropical area using the area's unique plants for animal feed; cacti are chopped for animal fodder, plant residues are stored in hand dug pit silos; leaves of native shrubs are consumed by goats and sheep.

Water storage and irrigation systems are important to land settlement communities here but now stores of water have been depleted as farmers

LEFT Farmers process the moist residue from sisal plants (grown for making rugs and ropes) and store the residue in shallow pits for animal fodder.

RIGHT SHARE has funded sheep and goats herds that are well suited to survive in the semi arid region.

.....
have been waiting for rain for 2 years. SHARE has recently been able to provide some support to families in communities where SHARE has worked in the past by providing funds for truckloads of water for livestock.



FARMING ON STEEP MOUNTAIN SLOPES

Honduras is a low-income food deficit country of 7.5 million people, where the farmers, among the most vulnerable in the world experience the region's frequent setbacks. One-third of the population lives on less than one dollar a day. An estimated 1.5 million Hondurans face food insecurity resulting in chronic malnutrition for half of the rural population. (World Food Program, www.wfp.org) The rich lowlands of Honduras are owned by a few large landowners or multinationals who produce foods for export while small scale farmers grow

their family's corn and beans on small plots on depleted mountainous terrain. With very low incomes from itinerant, sporadic farm labour, families eat what they can produce and try to endure the "hungry season" from April to July when their stored corn may be depleted and the new crop still immature.

SHARE is helping farmers in Honduras by providing irrigation systems funded in SHARE's CIDA (Canadian International Development Agency) project. Families are assisted by an project funded agriculture specialist.

A farming cooperative of 18 families, living high on the mountain side, are encouraged with their success using

On small mountainous land settlements, Honduran farmers grow abundant crops using irrigation systems funded in the SHARE/CIDA project, increasing income and providing a diversified diet.

.....
their new gravity fed irrigation system of hoses, pipes and sprinklers to grow abundant crops of green beans, organic carrots, potatoes and cabbages. Increased yields and year round production have improved family situations. Extra income from the strawberry crop is paying school fees, allowing some teens to attend high school. Families now have improved nutrition with a more varied diet. The hungry season has been eliminated!

DIVERSIFICATION REDUCES RISKS ON SUBSISTENCE FARMS



“We have lost our corn crop for the last two years so we know we need to diversify,” stated the leader of the farmer cooperative of 35 families in El Salvador. SHARE’s funding has provided technical assistance and initial inputs including bags of tilapia feed to bring the tilapia ponds into production.

Subsistence farmers and itinerate farm workers who rely on one staple crop to feed their family are greatly affected when their staple crop fails. Purchased foods are unaffordable. In many SHARE projects farmers are encouraged to diversify production and are supported with training and basic inputs to produce several products for family consumption and local sales, thus reducing the risk.

Livestock provide a dependable second source of food and income when crops fail. On a remote land settlement in El Salvador, a cooperative of farmers care for a cattle herd received from “pass on” from another successful SHARE herd. The farmers

harvest corn and sorghum on the rocky low class, arid land. The corn is the staple crop for the family’s meals of corn tortillas. In years when the corn crop is a failure, a calf is sold to provide income to purchase corn, providing insurance against hunger.

SHARE’s funding provided technical assistance and inputs for farmers in a cooperative to diversify into tilapia production.



Miguel, a member of a SHARE cattle cooperative, has diversified to feed his family in an arid area of El Salvador. In addition to the cattle and corn crop, he produces honey and tends a few turkeys, pigs, chickens and geese in his farm yard.

THANK YOU!

EVERY DONATION IS IMPORTANT!

Thank you to all who donated, planned ways to raise funds for SHARE or attended fund raising events.

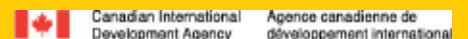
A big thank you to SHARE’s generous Honorary Patron, Mark Cullen and to donors who pledged to donate to meet The Mark

Cullen Challenge. In this 5 year challenge Mark pledged to match new donations providing funds for SHARE’s commitment to the CIDA project and to ensure long term support improving SHARE’s ability to plan for future. There are so many worthy projects for SHARE to do!

SHARE thanks the Retired Teachers of Ontario, Wellington District 31, for a Service to Others grant, the Eunice K. Meyer Charitable Foundation for their generous donation to SHARE (through

Tides Canada Foundation), the Beaty Family Foundation for their ongoing support (from funds held within the Oakville Community Foundation) and our Gold Sponsors Green Tractor Inc., Barb & Karl Davis and RBC Dominions Securities, Steve Robinson & Associates.

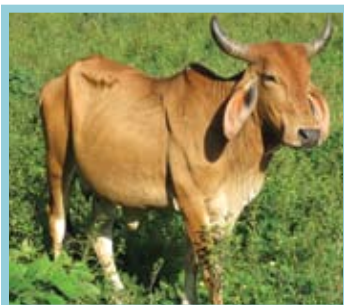
SHARE is supported by



YOUR DONATION WILL MAKE A DIFFERENCE

SHARE has **THE CAPACITY** to expand our projects with reliable partners.
SHARE has **THE VISION** and our partners have **THE STRENGTH** to assist thousands more rural families.

--- Your donation can be matched 3 to 1 in SHARE's CIDA project ---



Livestock: Cow, goats, sheep \$150-\$700



Adult Literacy \$100



Agriculture Training \$100



Materials/cooking stove \$100



High School Scholarship \$300



Vocational Training for Youth/Supplies \$30-\$60



Agriculture Inputs \$25-\$200



Water Filter Program Up to \$200

SHARE FUND RAISING EVENTS FOR 2013

APRIL 13 THROUGH TO JUNE

- Garden Workshops, Plant Paradise Country Gardens, 16258 Humber Station Road, Caledon. 10:00am. \$10/workshop. For topics see - www.plantparadise.ca. Call 905-880-9090.

JUNE 1 - Annual Perennial Plant Sale, Sharing Hands Ladies Group, Cheltenham General Store 14386 Creditview Road, Cheltenham, 9am - 1:00pm. Contact 905-838-0897 or 888-337-4273.

JULY 6 & JULY 7 - Annual Delphinium Festival, 9am - 5pm. Plant Paradise Country Gardens, 16258 Humber Station Rd., Caledon. Guided garden talk/tour, raffle, refreshments, artisans (Art in the Garden). Speakers including Charlie Dobbin. Gardening seminars (\$25). For topics see www.plantparadise.ca Call 905-880-9090.

JULY 15 - Annual Golf Tournament, Guelph Lakes Golf & Country Club. Call Craig 905-866-2964 or ENTER ONLINE (www.shareagfoundation.org/events).

SEPT. 8 - Annual Corn Roast for scholarship fund, 3-7pm. Raefield Farm, 5231 County Road #27 between Rockwood and Bruce Dale. Music, farm walks, swimming, hayride and food. Bring a lawn chair. Call Ellen Thomson 519-856-9953.

NOV. 2 - Annual Dinner Dance, Live and Silent Auction. 6:30pm Speranza Banquet Hall, 510 A Deerhurst Dr., Brampton. ON. Doors open for silent auction at 5:30pm. \$75/person with \$40 tax receipt. Call 905-838-0897 or 888-337-4273 for tickets or to sponsor a table.

Thank you to those who helped with and those who attended the Copetown Lions Dinner and Wacky Card Night.

DONATE

Online at:

www.shareagfoundation.org

Or by mail:

**S.H.A.R.E. Agriculture Foundation,
14110 Kennedy Road, Caledon ON, L7C 2G3**

Provide hope and opportunity with a meaningful gift.

Gift cards are sent to the recipient if you request and provide information.

Help SHARE plan for the future; consider a legacy gift or regular givings to SHARE.

SHARE News is published twice a year.

WRITERS/EDITORS: Marg Frayne
(519-843-3274 margfrayne@hotmail.com),
Laurie Weber, Trish Murphy
DESIGNER: Jay Dart

TELEPHONE: 905-838-0897
or toll free: 1-888-337-4273
FAX: 1-905-838-0794

CHARITY NUMBER:
BN: 13150 7428 RR0001

BOARD OF DIRECTORS

PRESIDENT	Murray Brownridge
TREASURER	Joe Gray
ASSISTANT TREASURER	Bob Pell
VICE PRESIDENT	Trish Murphy
PAST PRESIDENT	John Webster
SECRETARY	Brian Cleave
OTHER DIRECTORS	Steve Anderson, Trudy Blackburn, Stephen Hood, Paul McLellan, Hugh McLelland, Craig Lonsdale
PROJECT OFFICERS	Bob Thomas, Les Frayne
PATRON	Mark Cullen

JOIN S.H.A.R.E. AGRICULTURE FOUNDATION ON FACEBOOK